



Sirius Optics
Unit 1
26 Darnick Street
Underwood, Qld 4119

Opening Hours

10am-5:30pm Mon-Fri
9am-2pm Sat

Phone: 07 3423 2355
www.sirius-optics.com.au

ZWO Filter Drawer Nikon

AUD
\$165.00

Product Images



Short Description

New filter Drawer for carrying 2" filter and connecting ASI cooled cameras to Nikon Lens

Description

Product Description

New filter Drawer with a thickness of 29mm that can be used for carrying 2" filter and connecting ASI cooled cameras to Nikon Lens.

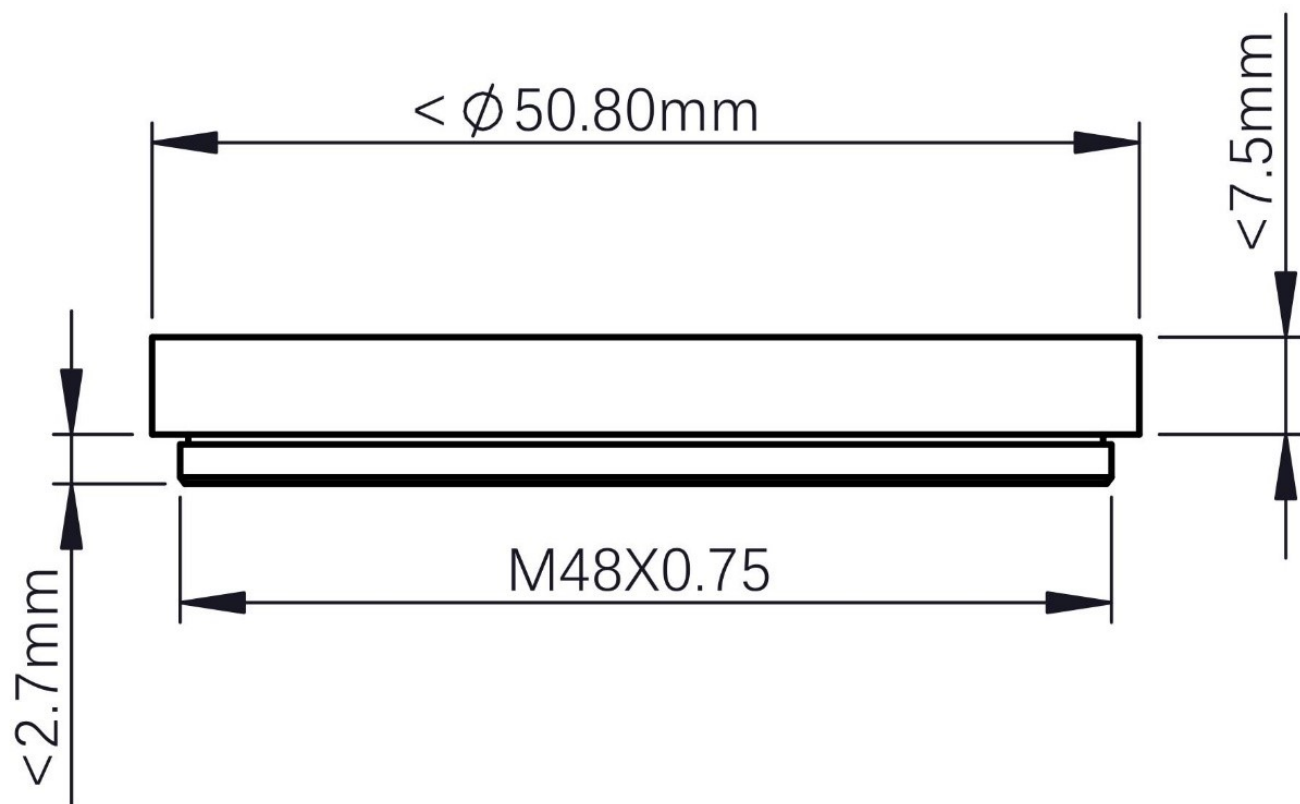


It is compatible with all ASI cameras with 17.5mm back focus distance (except ASI GT series):
1600/294/183/071/533/2600/6200/2400



It can be used with all ZWO 2" filters, including the duo-band filter, narrowband filter, IR-cut filter, etc.

If you are using 2" filters from third party, then please make sure they meet the requirements below.



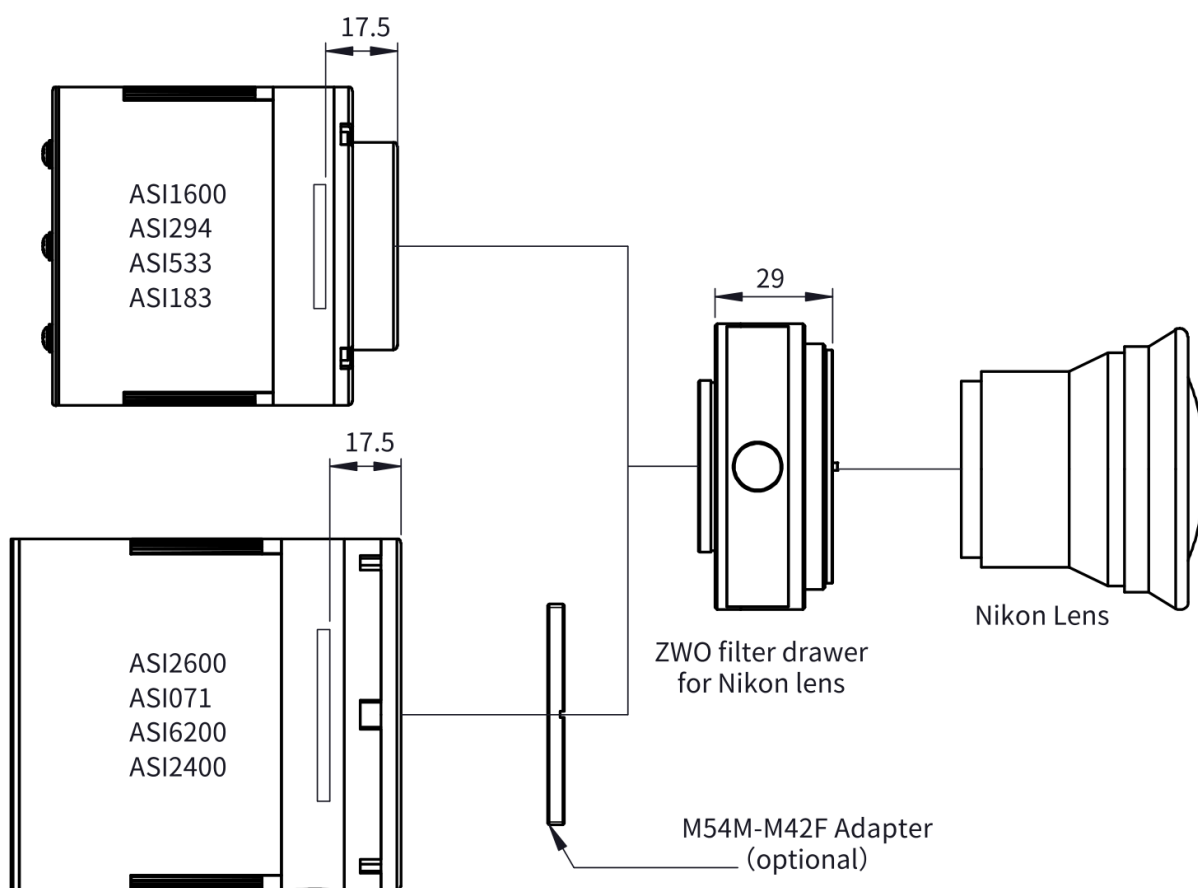
Filters are very easy and convenient to install and pull out with the ability of double strong magnetic adsorption.



Thread of the interface: M42*0.75.

You'll need use a M54M-M42F adapter (0mm) to connect the filter drawer to the full-frame camera.

Connection method:



Connecting to ASI1600/294/183/533:

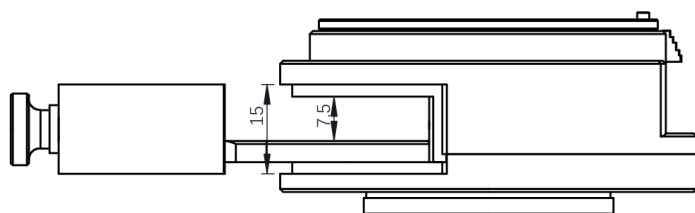
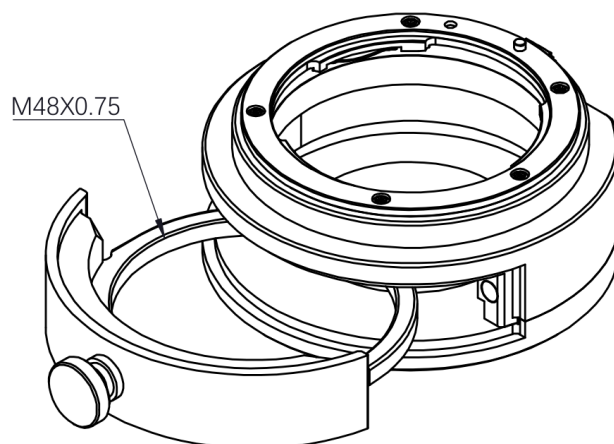
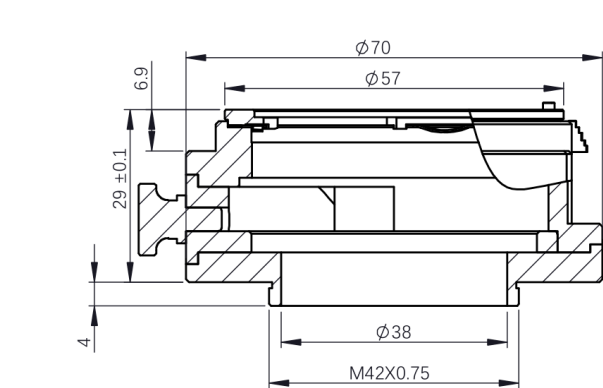


Connecting to ASI6200/2400/2600/071:



*The M54M-M42F adapter is needed when connected to full frame camera ASI6200/2400.

Mechanical drawing:



单位：毫米
Unit: mm

70mm diameter*29mm(thickness)

M42*0.75 male (external) thread (camera side)

M48*0.75 female (internal) thread (filter end)

Suitable for 2-inch astronomical filters

What's in the box?



ZWO filter drawer
for Nikon lens



M54M-M42F adapter

Additional Information

Specifications	No
----------------	----