



Sirius Optics
Unit 1
26 Darnick Street
Underwood, Qld 4119

Opening Hours

10am-5:30pm Mon-Fri
9am-2pm Sat

Phone: 07 3423 2355
www.sirius-optics.com.au

ZWO Electronic Filter Wheel (EFW) 5 x 2 inch

AUD
\$499.00

Product Images



Short Description

...

Description

ZWO EFW (5 x 2" or 7 x 2")

Product weight: EFW 5 x 2"=500g / EFW 7 x 2"=650g

Power supply: USB2.0

Control Mode: ASCOM and SDK

Driver: Free of driver



The filter wheel body is CNC milled from an aircraft graded aluminum block.

Excellent craftsmanship, very thin and light with only 20mm thickness.

The core part of our EFW is the stepper motor which has reliable performance and quality that comes from NPM, Japan.

We have two specifications for EFW2":

TYPE1: EFW5X2"

TYPE2: EFW7X2"

2" Thread-In Filters or

50.4mm \pm 0.5mm Unmounted Filters can be used

The 2" Electronic Filter Wheel can be rotated in both counter clockwise and clockwise direction for filter selection.



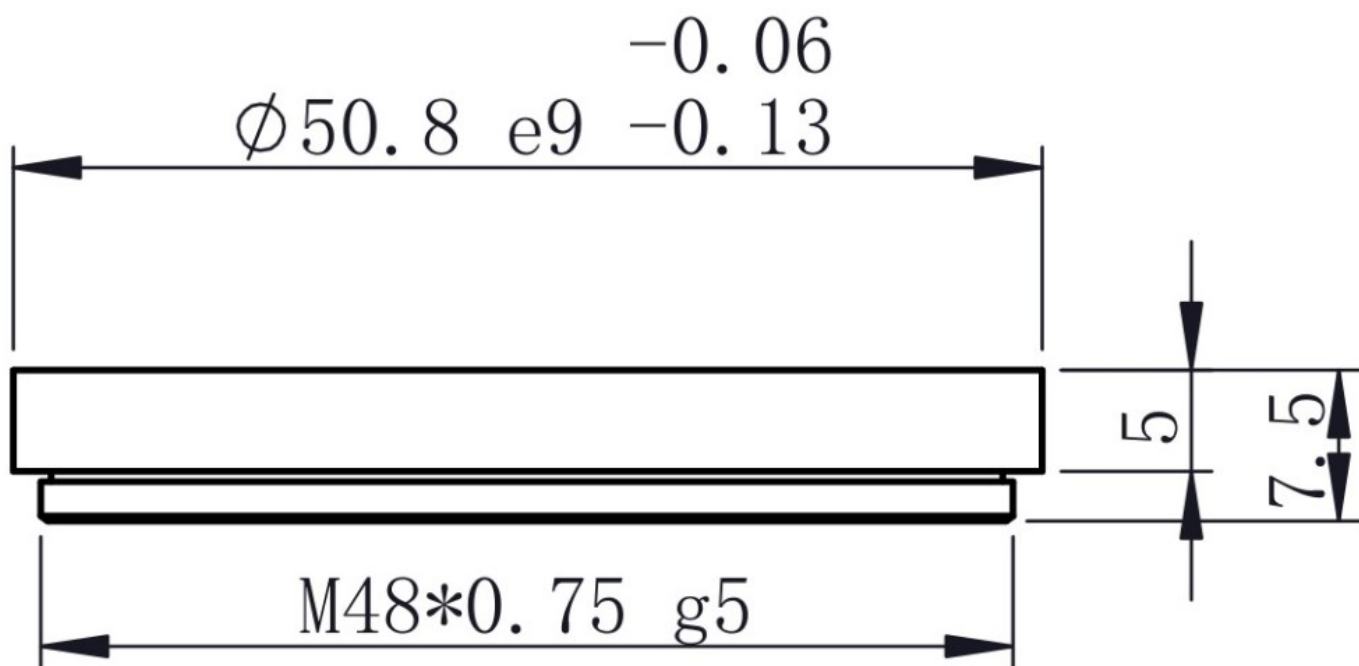


There is no need of multiple cables to power this wheel up, just one USB cable does the trick. The maximum power supply of this EFW is approximately 120mAh @ 5V, which can be operated from the Cooled CCD's USB2.0 port.

When connected to ASI6200, the distance from the filter to the sensor is about 18mm

Our 2" RGBL filters are recommended to work with ASI6200MM Pro camera, it will offer nearly 1:1:1 RGB color balance.

Below requirements must be met while using the 2" filter from third-party.



Additional Information

Specifications

N/A