



Sirius Optics  
Unit 1  
26 Darnick Street  
Underwood, Qld 4119

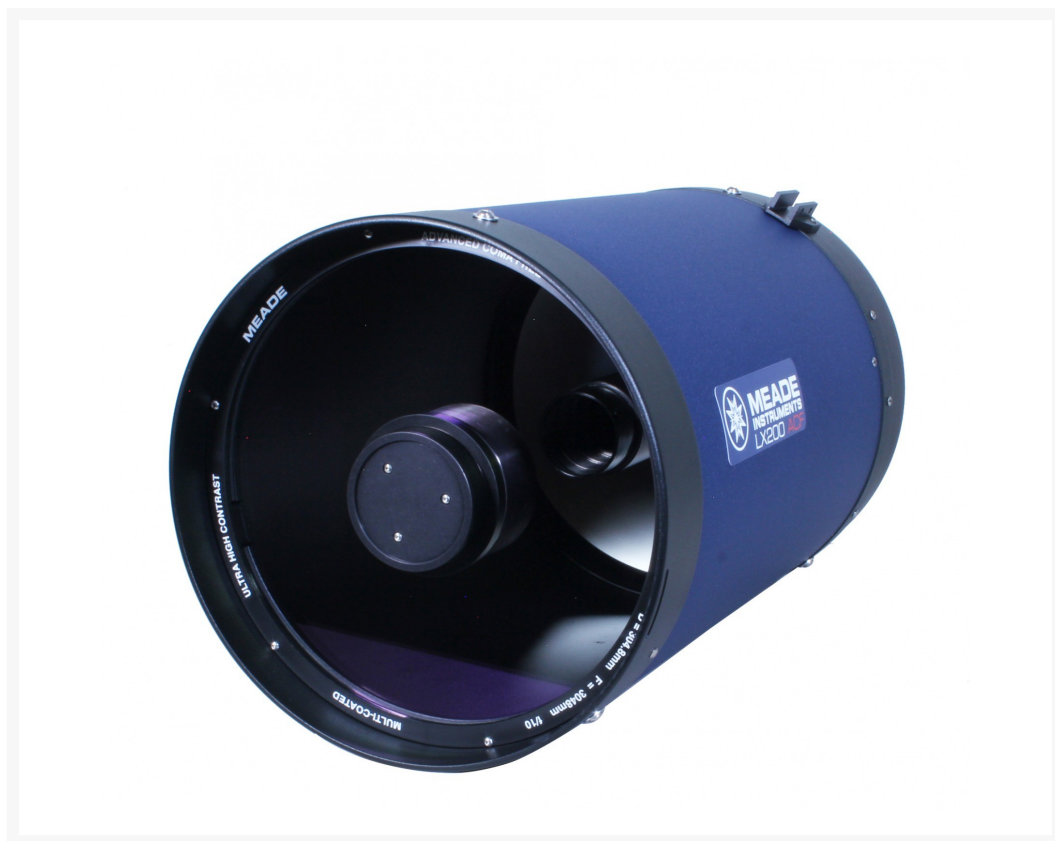
Opening Hours  
10am-5:30pm Mon-Fri  
9am-2pm Sat

Phone: 07 3423 2355  
[www.sirius-optics.com.au](http://www.sirius-optics.com.au)

## Meade 12in f/10 ACF OTA with UHTC

**AUD**  
**\$6,499.00**

### Product Images



### Short Description

- 12" f/10 Advanced Coma Free Optics - 3048mm focal length
- Ultra-High Transmission Coatings (UHTC)
- Oversized Low-Expansion Borosilicate Primary Mirror
- Primary Mirror Lock for increased image stability
- Losmandy-style Dovetail

## Description

Advanced Coma-Free LX200 Optical Tube comes with Meade's Ultra-High Transmission Coatings (UTHC), Oversized Low-Expansion Borosilicate Primary Mirror, Schott Borofloat Glass Corrector Plate, Diffraction Limited Optics, Losmandy-style dovetail, and Dust Cover.

The Advanced Coma-Free (ACF) optical system has brought the highest level of optical performance well within the reach of most amateurs. Using the Meade exclusive design, ACF optics achieve aplanatic performance — with a flatter field, reduced astigmatism and eliminated diffractions spikes — equal to Ritchey-Chétien systems, at a fraction of the price. Coupled with Meade's Ultra- High Transmission Coatings (standard on all LX200-ACF systems), you have the ultimate in premium optics.

All LX200 models feature a primary mirror locking mechanism, which effectively prevents movement of the primary mirror during long exposure astrophotography or observing. Turn the lock knob located just above the telescopes main focus knob and the progressive-tension primary lock completely cancels any residual image shift due to mirror movement during visual, photographic, or imaging applications.

The 12" LX200 Optical Tube Assembly #1210-60-01 has a 3048mm focal length, an f/10 focal ratio, and weighs 35lbs.

## Additional Information

Specifications	Series	LX200 Telescopes
	Warranty	3 Year
	Experience Level	Advanced
	Clear Aperture	12"
	Optical Design	Advanced Coma-Free (ACF)
	Optical Coatings	UTHC™
	Focal Length	3048mm
	Focal Ratio	f/10
	Resolving Power (Dawes' Limit)	0.380 arc-seconds
	Oversized Primary Mirror	Yes
	Mirror Lock	Yes
	Focuser Mechanism	Single Speed Focuser
	Assembled Product Weight	35 lbs