



Sirius Optics
Unit 1
26 Darnick Street
Underwood, Qld 4119

Opening Hours

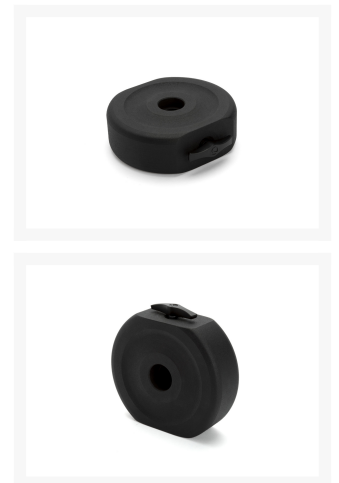
10am-5:30pm Mon-Fri
9am-2pm Sat

Phone: 07 3423 2355
www.sirius-optics.com.au

Celestron Counterweight - 12 lbs - 19mm Shaft - Advanced VX

AUD \$99.00

Product Images



Short Description

- Designed to fit 19mm counterweight shafts
- Sturdy lock knob keeps the counterweight safely on the shaft
- For full list of compatible mounts, please see description section below

Description

Counterweight for Advanced VX/CG-5/CGEM/CGEM II/CGX

Whether you are enhancing your mount setup or buying a replacement part, the counterweight is there to balance weight of the optical tube (OTA) and accessories on the other side of the Right Accession (RA Axis). If you add accessories to your telescope setup (ie camera, guider, etc), you may need to add additional counterweights to off-set the weight.

If the balance is off on one-side or the other, it can do damage to your OTA and setup, the motor gear, and/or may have issues with tracking accuracy. You can add additional counterweights to improve the responsiveness to the system by reducing the mass inertia, though you need to make sure you space out the counterweights along the shaft to reduce damage to your setup and that it is cost-effective and worth it for your telescope setup.

This counterweight comes with a sturdy knurled knob locks to safely hold in place on the counterweight shaft. The counterweight is designed to fit 19mm counterweight shafts

Below are the counterweights that go with each one of our recent Celestron mounts.

Counterweight Model	Weight (pounds)	Shaft-hole size (approx)	Mount
94203	11 lbs	0.75"	Advanced VX/CG-5/CGEM/CGEM II/CGX
94186	11.8 lbs.	0.75"	Advanced VX/CG-5/CGEM/CGEM II/CGX
94286	12 lbs.	0.75"	Advanced VX/CG-5/CGEM/CGEM II/CGX
94189	17 lbs.	0.75"	Advanced VX/CG-5/CGEM/CGEM II/CGX
94187	22 lbs	1.25"	CGX-L/CGE Pro/ CGEM DX

Mount	Counterweight Model(s)
Advanced VX	94186, 94189, 94203, 94286
Advanced CG-5	94186, 94189, 94203, 94286
CGEM	94186, 94189, 94203, 94286
CGEM II	94186, 94189, 94203, 94286
CGX	94186, 94189, 94203, 94286
CGX-L	94187
CGE Pro	94187
CGEM DX	94187

Additional Information

Specifications	Weight:	12 lbs (5.44 kg)
	Counterweight Shaft Diameter:	19mm (.74")
	Counterweight Compatibility:	Advanced VX CG-5 CGEM CGEM II CGX