



Sirius Optics
Unit 1
26 Darnick Street
Underwood, Qld 4119

Opening Hours
10am-5:30pm Mon-Fri
9am-2pm Sat

Phone: 07 3423 2355
www.sirius-optics.com.au

Celestron CGX-L Equatorial Mount and Tripod

**Regular
Price: AUD
\$6,899.00**

**Special
Price AUD
\$5,499.00**



Short Description

- Increased 75 lb load capacity. Exceptional load capacity to weight ratio
- Additional Aux accessory ports and autoguider port on the Dec axis for better cable management
- Larger 144 mm diameter worm wheels to better and more accurately drive heavier loads
- Longer 270 mm dovetail saddle to better support larger optical tubes
- Massive 70 mm stainless steel tripod legs with a wider stance for improved stability under heavy loads
- New accessory tray holds three 1.25" and two 2" eyepieces with an upright stand for your smartphone or tablet
- Heavy duty, 31.5 mm stainless steel counterweight shaft to support additional counterweights
- Spring-loaded brass worm wheel and stainless steel worm gear reduce friction and provide optimum gear mesh
- Internal cabling for worry-free remote operation. Power input and lower accessory ports remain stationary while the mount slews to avoid snags
- Includes Celestron's new PWI telescope control software, co-developed by PlaneWave Instruments. Software features multi-point mount modeling for extremely precise pointing accuracy
- Adjustable EQ head position to optimize center of gravity over the tripod and fully utilize the increased 3°-65° latitude range
- Integrated handles for easy transport and portability
- All-new ergonomically designed dovetail clamping knobs

Description

Celestron's newly designed CGX-L Computerized Equatorial mount is the latest addition to our fully computerized equatorial mount series. Capable of carrying Celestron's largest optical tubes with ease, CGX-L is designed for backyard observatories and remote imagers looking for exceptional load capacity to weight ratio, compact design, and innovative features that fully support large telescopes, imaging kits, and the latest in wireless tech accessories.

Key design goals included larger 144 mm diameter worm wheels which provide smoother operation and can more accurately drive heavier loads, longer 270 mm dovetail saddle to support larger optical tubes, remote operation friendly features such as home and limit optical sensors, easier polar alignment adjustments, and better cable management overall. In addition to that, we've made mechanical and ergonomic improvements throughout to make the mount sturdier, easier to use, and easier to transport. COMPACT. ERGONOMIC. INNOVATIVE.

NEW CGX-L FEATURES

- Increased 75 lb load capacity. Exceptional load capacity to weight ratio
- Additional Aux accessory ports and autoguider port on the Dec axis for better cable management



Additional Ports

- Larger 144 mm diameter worm wheels to better and more accurately drive heavier loads



Larger worm wheel

- Longer 270 mm dovetail saddle to better support larger optical tubes
- Massive 70 mm stainless steel tripod legs with a wider stance for improved stability under heavy loads
- New accessory tray holds three 1.25" and two 2" eyepieces with an upright stand for your smartphone or tablet
- Heavy duty, 31.5 mm stainless steel counterweight shaft to support additional counterweights
- Optional add-on polar axis finderscope custom designed for CGX and CGX-L



Polar Axis Finder (Sold Separately)

- Supports WiFi and wireless operation accessories such as StarSense AutoAlign and SkyPortal WiFi Module (sold separately)

Mount Features:

- Compact, lower profile equatorial head provides improved stability and portability. Sturdier and more rigid with quicker dampening time
- Improved motors provide more torque, better slewing and tracking under heavy loads
- Heavy duty belt-drive system minimizes backlash while providing smooth motor operation at full capacity
- Clear windows built into motor covers so pulleys and belts can be monitored



Smoother Belt Drive System

- Spring-loaded brass worm wheel and stainless steel worm gear reduce friction and provide optimum gear mesh
- Internal cabling for worry-free remote operation. Power input and lower accessory ports remain stationary while the mount slews to avoid snags
- Internal hard stops for both axes prevent cable tension and tripod strike



Mechanical Hard Stops

- Internal optical sensors on both axes for simple and safe remote operation
- Home sensors allow the mount to always start in the index position regardless of orientation before a power reset
- Limit sensors automatically shut off slewing or tracking before reaching the hard stop fail safe
- Includes Celestron's new PWI telescope control software, co-developed by PlaneWave Instruments. Software features multi-point mount modeling for extremely precise pointing accuracy



PWI Software

- Software Polar Align: "All-Star Polar Alignment" allows quick and very precise polar alignment. Align on any bright named star without extra polar alignment accessories, apps, or other assistance
- Adjustable EQ head position to optimize center of gravity over the tripod and fully utilize the increased 3°-65° latitude range



Dual Dovetail Saddle

- Redesigned tripod has a widened stance for added stability. The minimum tripod height has also been lowered per user feedback
- Tripod legs can be collapsed with accessory tray installed for faster setup and transport

Improved Ergonomics:

- Integrated handles for easy transport and portability



Ergonomic Carry Handles

- All-new ergonomically designed dovetail clamping knobs
- Innovative and improved polar alignment adjustment system



Polar Alignment Adjustment

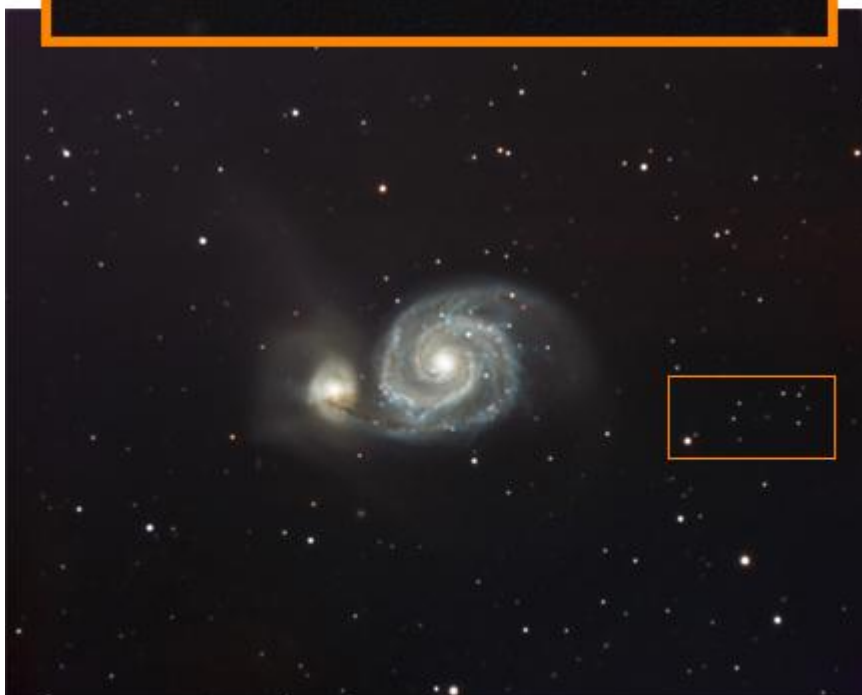
- All-new ergonomic adjustment knobs with reduced friction for smooth and easy positioning under full loads. Stationary latitude knob with a newly-designed linkage system greatly reduces the amount of friction when polar aligning the mount. Redesigned azimuth adjustment with low-friction Teflon bearings to make adjustments easy under full load. No more binding, rough adjustments!
- Easy to read latitude scale

Electronics:

- NexStar+ hand control with USB port
- USB 2.0 port used to connect directly to PC with PWI Software
- 2 available autoguider ports for optimum cable management
- PEC sensor and PPEC ready
- Threaded 12VDC power input barrel connector
- Internal Real Time Clock (keeps time and site information saved)
- On/Off rocker switch with red LED

Precision Tracking

This image of M51 is the result several of 5 minute guided sub exposures. Taken with the Celestron EdgeHD 1400 with 0.7x Focal Reducer, guiding at 2,737mm under somewhat turbulent seeing conditions. Despite the seeing conditions, average guiding accuracy was sub-arcsecond. The CGX-L supports the 14" optical tube for high resolution astrophotography with ease.



Additional Information

Specifications

MOUNT INFO:

Mount Type	Computerized Equatorial
Instrument load capacity	75 lbs (34 kg)
Height adjustment range (includes mount and tripod)	908.05mm - 1339.85mm (35.75" - 52.75")
Tripod Leg Diameter	69.85mm (2.75") Steel tripod with graduated markings on lower section
Latitude adjustment range	3° - 65°
Mount Head Weight	52.6 lbs (23.8 kg)
Accessory Tray	Yes
Tripod Weight	46.2 lbs (21 kg)
Weight of Counterweights	1 x 22 lbs
Slew Speeds	9 slew speeds - max speed 3°/second
Tracking Rates	Sidereal, Solar and Lunar
Tracking Modes	EQ North & EQ South
GPS	N/A
Dovetail Compatibility	Dual saddle plates (Vixen and CGE saddle)
Number of Auxiliary ports	4 Aux ports (Hand Control can use any Aux port, 2 are located near the dovetail saddle for optional accessories)
Autoguide port	Yes, 2 ports (one is located near the dovetail saddle)
USB Port	Yes, input for Mount and Hand Control
Power Requirements	12V DC, 3 amps
Motor Drive	DC servo motors
Alignment Procedures	2-Star Align, 1-Star Align, Solar System Align, Last Alignment, Quick Align
Periodic Error Correction	Yes
Computerized Hand Control	2 line x 18 character backlit Liquid Crystal Display, 19 LED backlit buttons, USB 2.0 port for PC connection
NexStar+ Database	40,000+ objects, 100 user defined programmable objects. Enhanced information on over 200 objects
Software	PWI Telescope Control Software, Celestron's Starry Night Special Edition Software, SkyPortal App
Total Kit Weight	120.8 lbs (54.8 kg)
Included Items	CGX-L Equatorial Head CGX-L Tripod Accessory Tray 1 x 22 lbs counterweight NexStar+ Hand Control DC Power Cable (item# 18769) 8mm Allen wrench (contained in rear carry handle)